

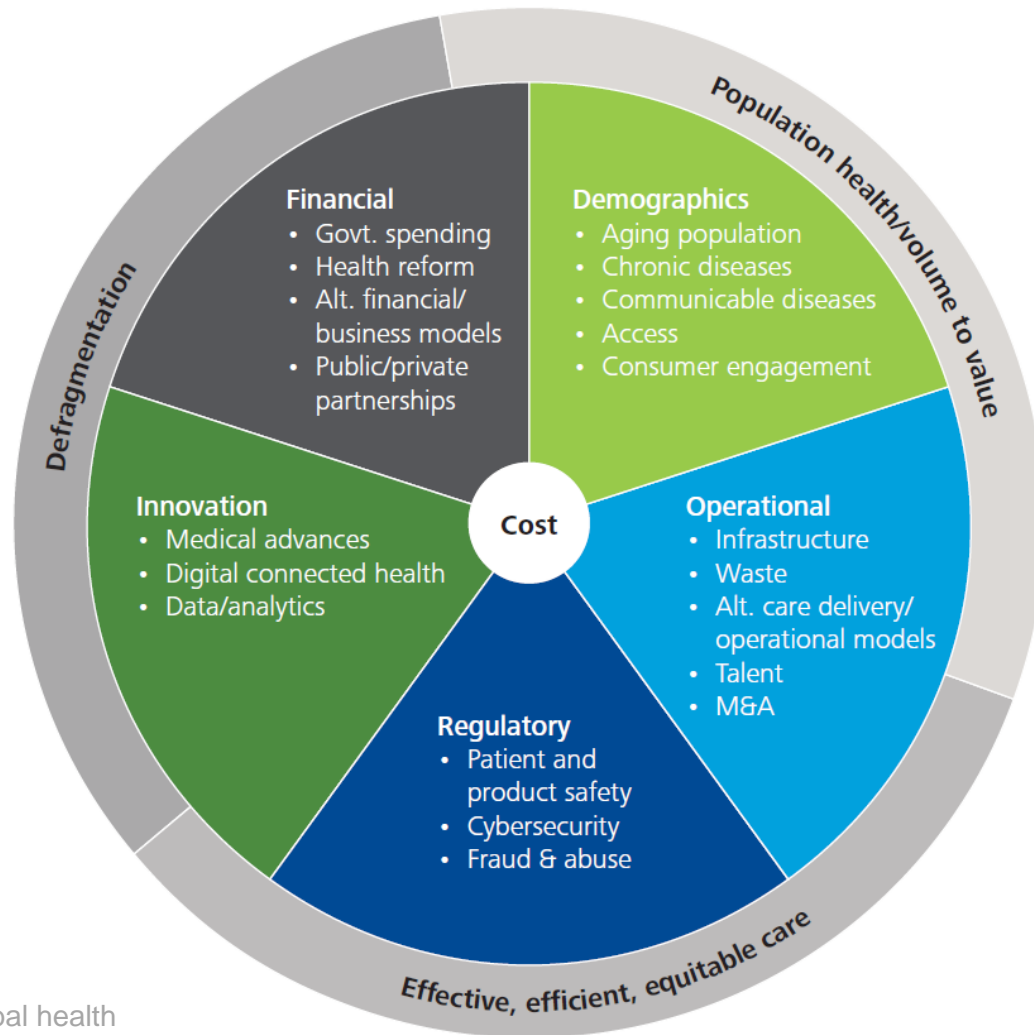


Healthcare Transformation towards Patient Centric Model

September 14-15, 2017

Forum eHealth Gdańsk

HealthCare Challenges

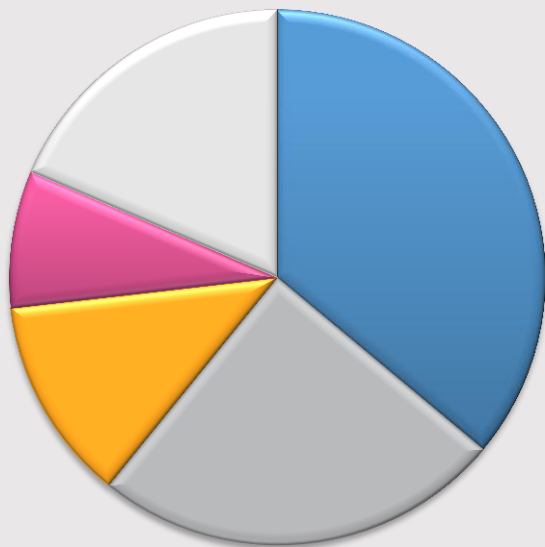


Source: Deloitte, 2016 Global health care outlook (2015), p3

Healthcare is undergoing Transformation...

FROM

Hospital-Centric Model

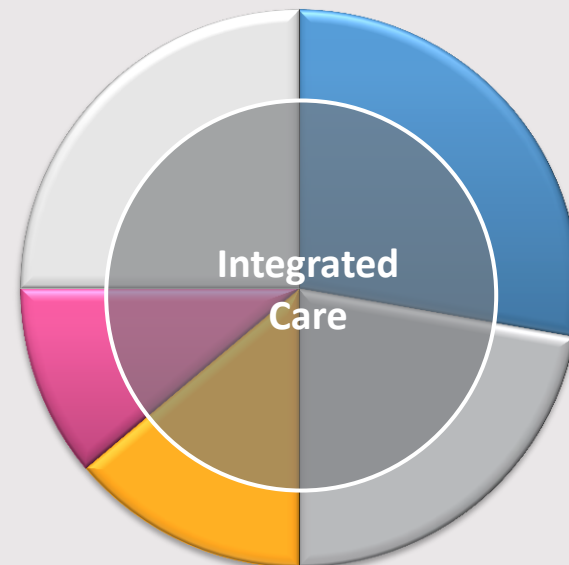


Drivers of Model Transformation

- Medical practice focus on **coordinated, collaborative care** across the continuum
- **Standardized care** approaches to reduce care variation
- **Care process redesign** to reduce unnecessary work in all care settings
- **Optimized service distribution** to ensure the right care at the right site
- New **value-based payment models** offer financial incentives
- Industry frameworks: **VALUE STEPS, DIAM.....**

TOWARDS

Population-Centric Model



Hospital Services



Prescription Services



Physician and
Clinical Services



Home Health and
Nursing Home Care



All Other

Factors influencing Transformation

— Industry Response



Multispecialty collaboration and enhanced mobility on an IT-centric interoperable platform



Multispecialty Collaboration

- ✓ Expand sharing
- ✓ Enable easy collaboration
- ✓ Improve clinical efficiency
- ✓ Improved multi-specialty team communication

Enterprise Imaging Mobile Workflows



- Real-time Communications
- Image Viewing Workflows
- Image Acquisition Workflows
- On the Go Access to Reports

Health Factors – More than health care ...

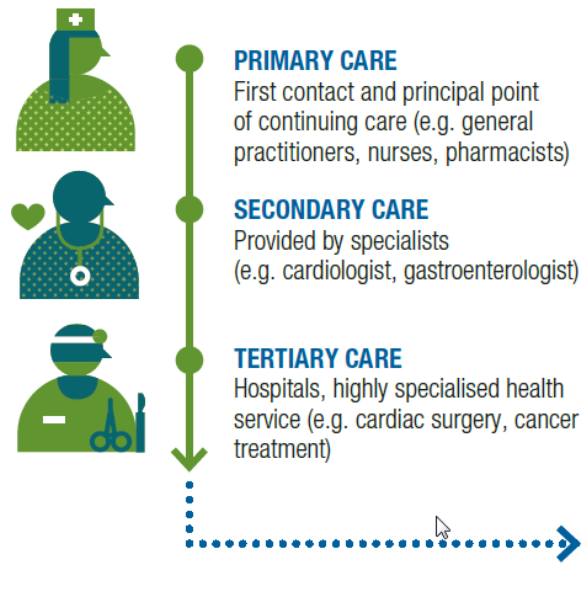


The Determinants of Health (1992) Dahlgren and Whitehead

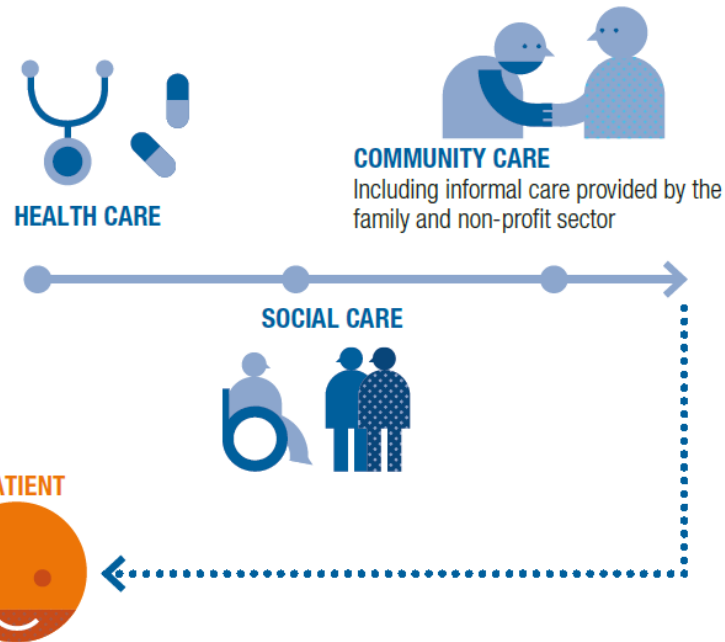
What is Integrated Care?

INTEGRATED CARE IS THE **COORDINATION OF CARE:**

VERTICALLY, ACROSS THE LEVELS OF HEALTH CARE:



HORIZONTALLY, ACROSS DIFFERENT TYPES OF CARE DELIVERY:



SOME RELEVANT FEATURES:

- ✓ Shift from reactive service delivery (after adverse health events, e.g. a cardiac arrest) to preventive and proactive care (prevent and manage chronic conditions, e.g. maintain healthy blood pressure / cholesterol level)
- ✓ Patient-centred approach and active involvement of the patients in understanding and managing their own diseases (patient empowerment)
- ✓ Move from institutional to community / home based care

The case for Integrated Care Solutions

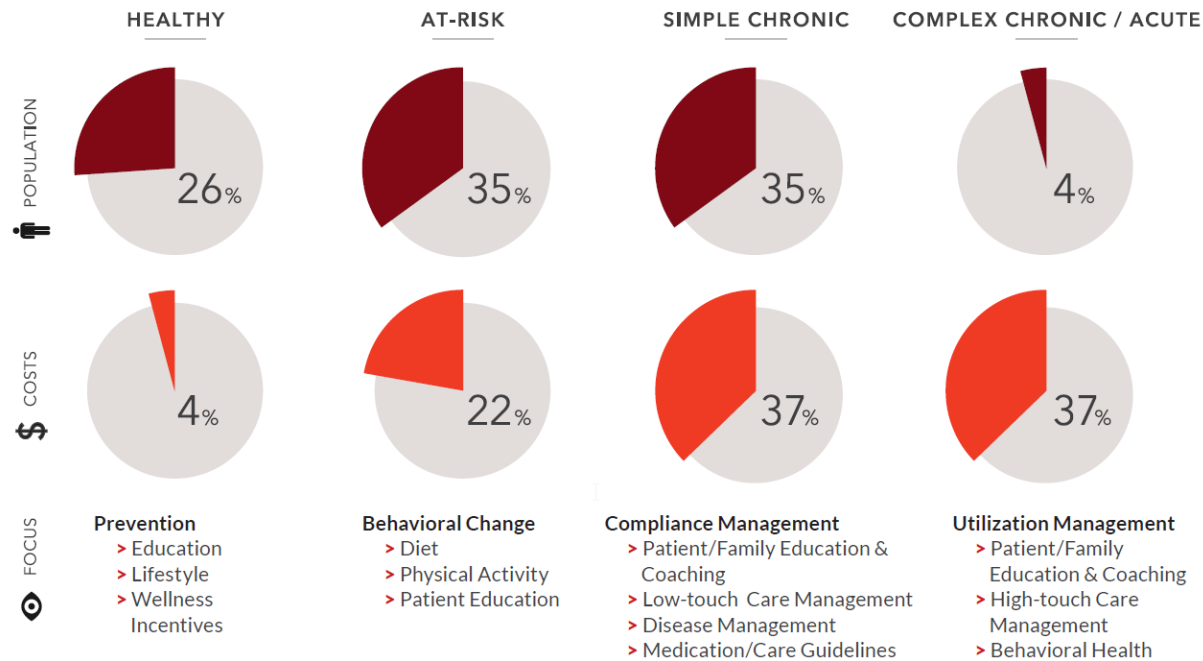
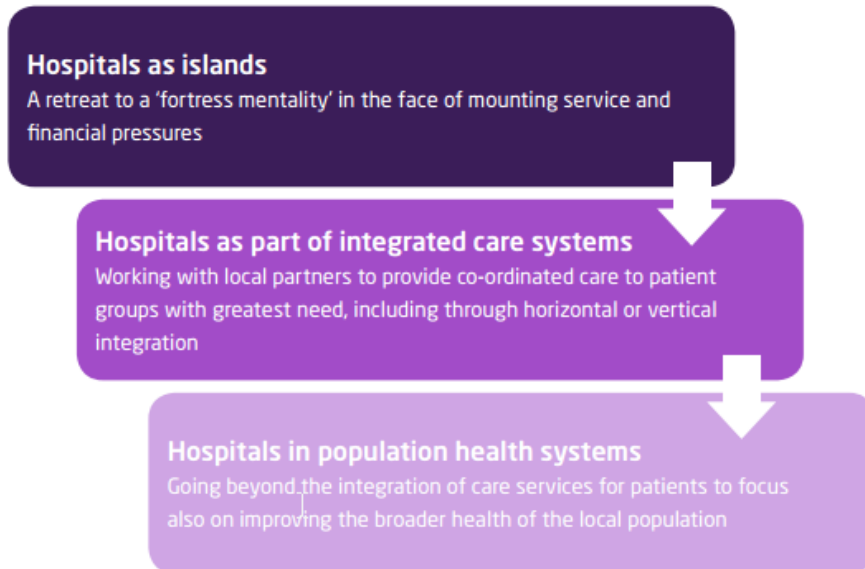


Figure 2.3: Stratifying Population for Cost and Care Models

The role of acute hospitals in Integrated Care

- 2015 study in UK, potential impact of integrated care on the role of acute hospitals:
 - delivering more care beyond the hospital walls
 - the future size and shape of acute hospitals
 - an increased role in prevention and population health
 - new organisational models with local partners.
- Source: King's Fund (2015), Acute Hospitals and Integrated Care. From hospitals to health systems



The Big Integrated Care IT Challenge



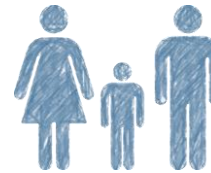
Acute care



Community care



GP Practices



Social care



Urgent care



Analytics and Research



Pharmacy

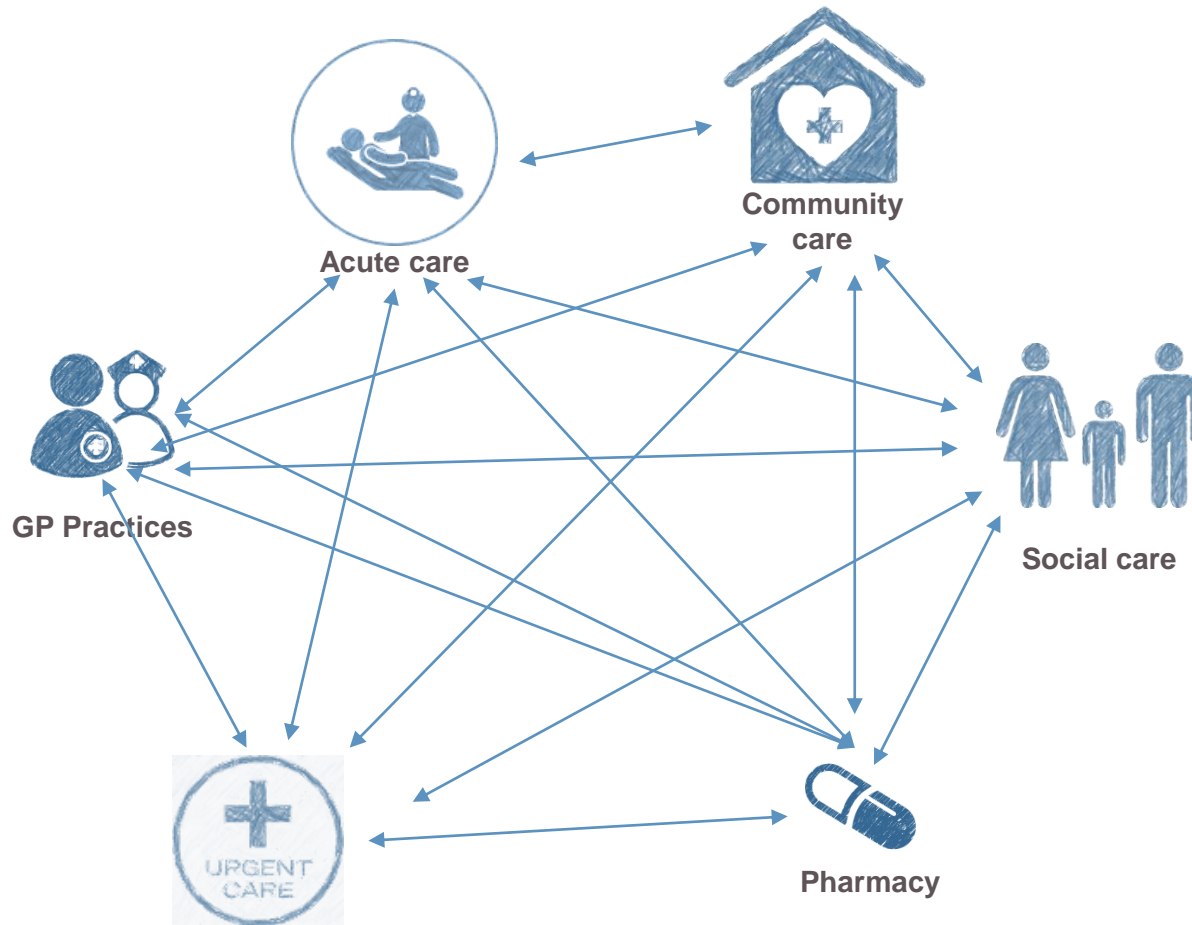
Challenges

- Each Healthcare provider system has its own system of choice
- Silo's of Patient's information
- Proprietary standards
- Political and Juridical challenges in sharing data
- IT budget Cost Pressures
- Coordination workflows

Impact

- !! Lack of Complete Patient Records
- !! Duplication of Procedures and Activities
- !! Prohibits transformation of delivery
- !! Expensive to maintain

The (Classical) Peer to Peer Health IT Solution



Characteristics

- ❖ Point to Point interfaces
- ❖ Combination of standards based and non standards based
- ❖ Duplication of manpower and resources to build, validate and maintain P2P interfaces
- ❖ Not always Real-time and not always up-to-date
- ❖ Delegate Patient Consent and Privacy Management to each supplier
- ❖ No Platform

Impact

- !! Large Capital Investments to implement and high Operational Costs to maintain
- !! Prohibits Transformation of Delivery Models in the Digital Age
- !! High Costs to implement coordinated care and mobility
- !! No Central Repository for population health or care coordination

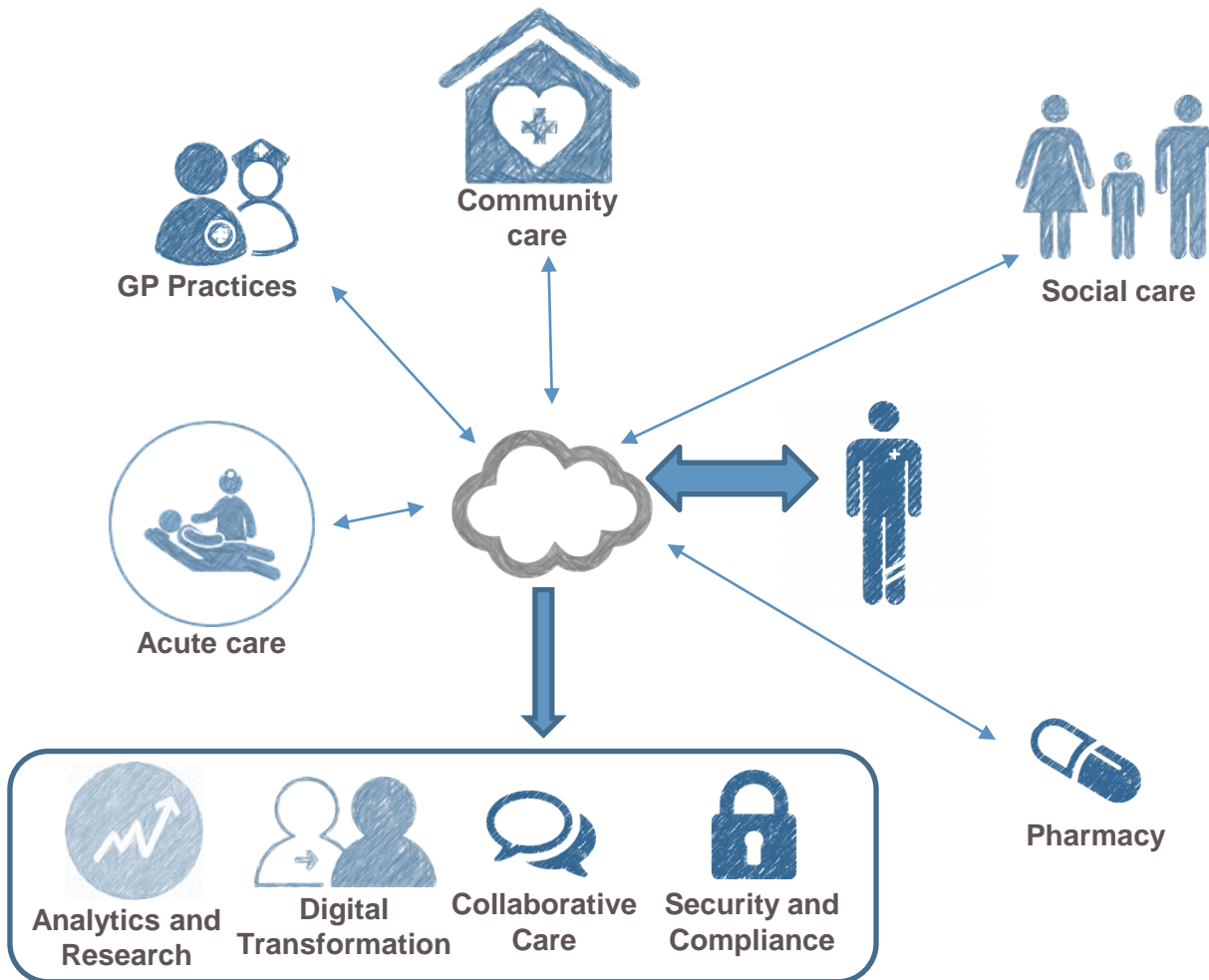
The Neutral IT Platform for Care Transformation

Characteristics

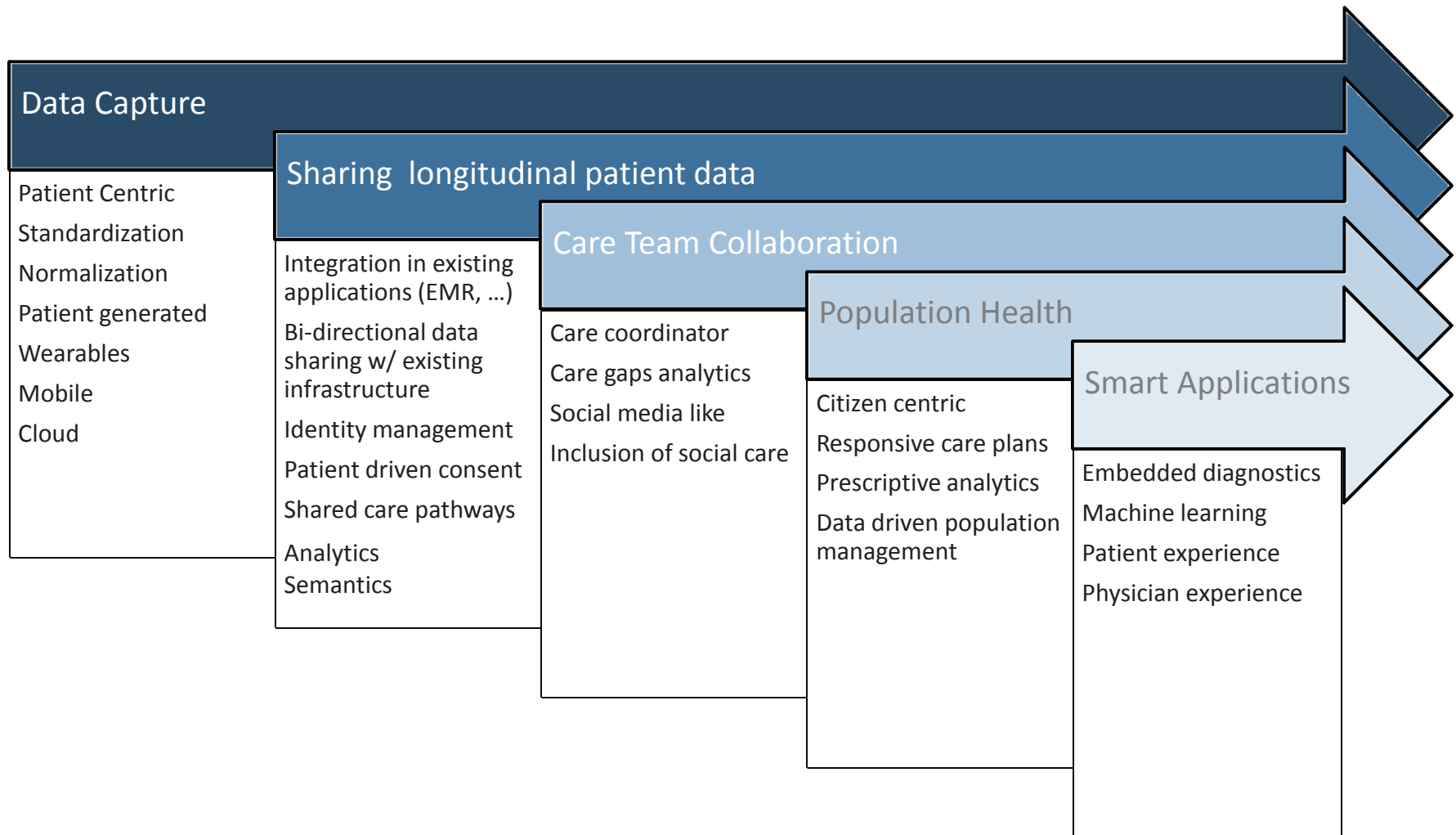
- ⊕ Neutral, Open Standards based platform
- ⊕ Aggregated Health records with centralized consent and compliance
- ⊕ Support multiple standards
- ⊕ Data and Care Orchestration tools for Micro applications
- ⊕ Provide access to the patient's longitudinal record embedded within each entity's system
- ⊕ FHIR based Open APIs, Smart Notifications, Workflow Engines and CEP

Impact

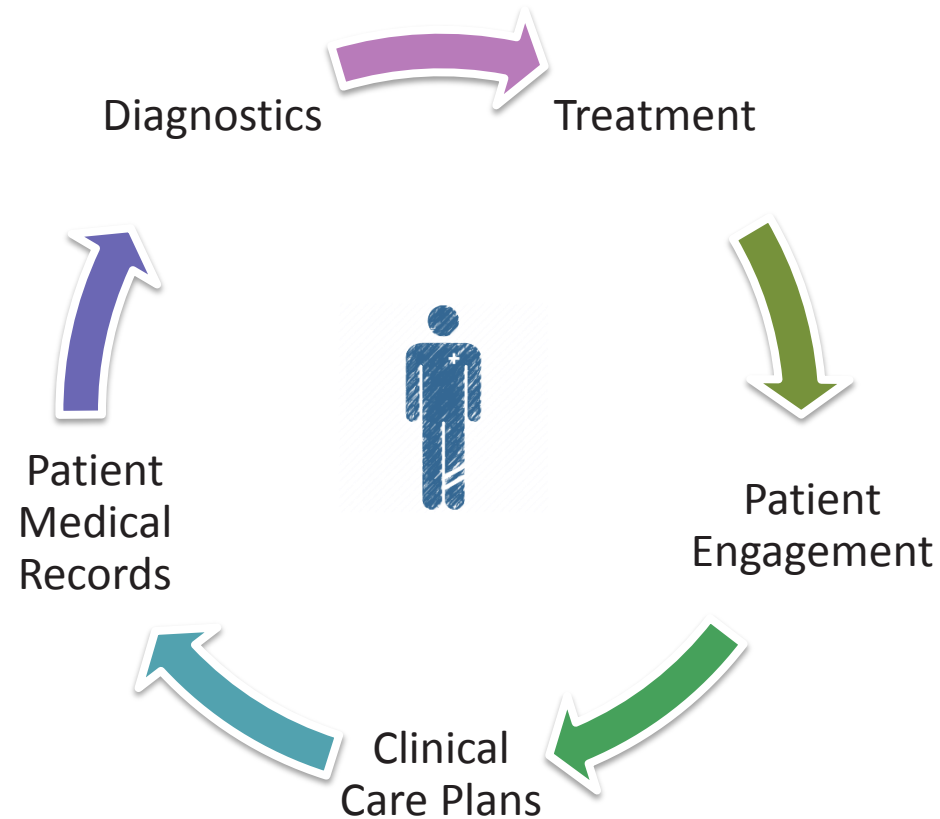
- !! Vendor Neutral and interchangeable Platform
- !! Implement digital transformation strategies without underlying system complexities
- !! Aggregated Clinical Data
- !! Patient-centric design



Technology support for a new care paradigm



Integrated Care Cycle





BENEFITS

ZINTEGROWANA OPIEKA ZDROWOTNA

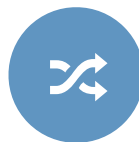
KORZYŚCI



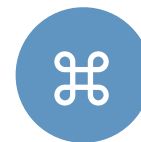
Zdalny dostęp do
wyników i opisów



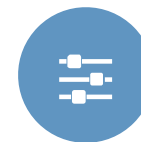
Konsolidacji i integracja
danych pacjenta



Zoptymalizowany i
wydajny OBRAZOWY
przepływ pracy



Współpraca
multidyscyplinarna
w REGIONIE



Dostęp do OBRAZÓW
dla wszystkich
specjalności



Zdalne konsultacje
nagłych przypadków



Zwiększona
skuteczność w pre-
postdiagnostyce



Kontrola procesu
leczenia
PLANY OPIEKI



Rezygnacja z CD/DVD



Zwiększenie
efektywności dostępu
do historii pacjenta

SZPITAL

KORZYŚCI

...



Obniżenie Kosztów Leczenia



Możliwość zdalnego monitorowania pacjenta



Szybsza diagnostyka



Uproszczona Implementacja



Ograniczenie liczby powtórzonych badań i możliwości utraty danych



Możliwość zlecania badań i wizyt w innych ośrodkach



Optymalna unifikacja środowiska IT



PACJENT

KORZYŚCI



- ☐ Możliwość diagnostyki w miejscu zamieszkania (POZ, lokalny szpital, dom)
- ☐ Zmniejszenie kolejki do lekarza i czasu oczekiwania na kontakt z lekarzem specjalistą
- ☐ Większe bezpieczeństwo (karta pacjenta zawsze „pod ręką”)
- ☐ Możliwość samokontroli oraz „samodzielnego” realizowania planu leczenia/rehabilitacji

